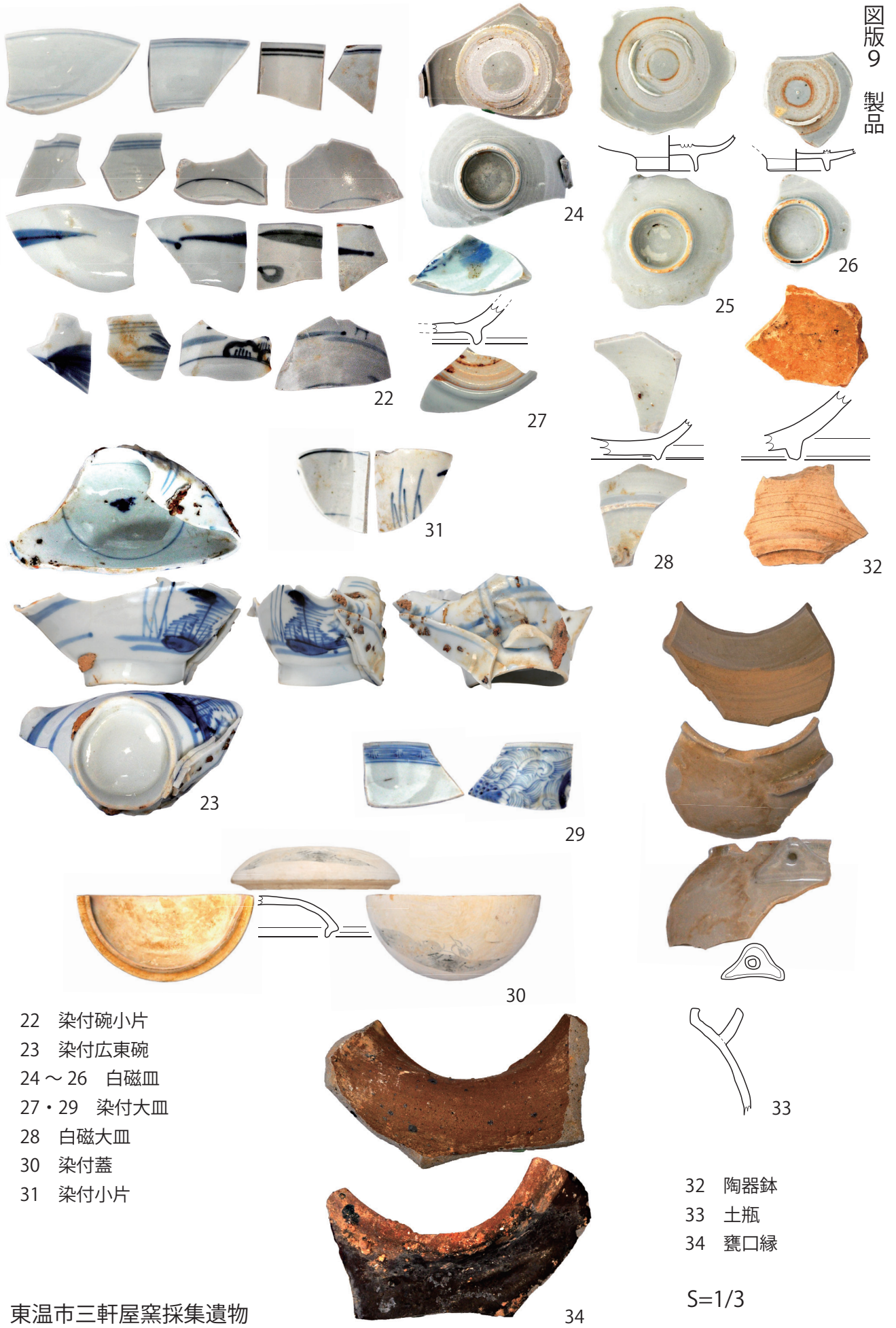


1 ~ 21 染付碗

S=1/3



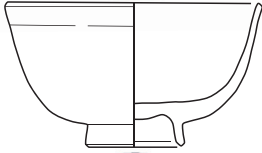
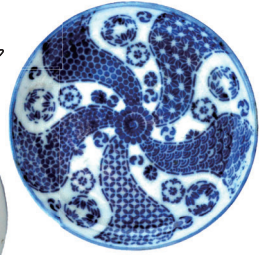
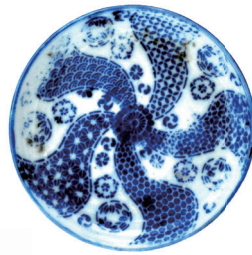
- 22 染付碗小片
- 23 染付広東碗
- 24～26 白磁皿
- 27・29 染付大皿
- 28 白磁大皿
- 30 染付蓋
- 31 染付小片

- 32 陶器鉢
- 33 土瓶
- 34 甕口縁

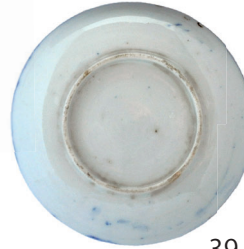
S=1/3



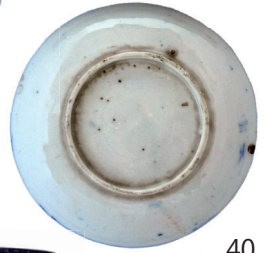
35 ~ 37
型紙摺染付端反碗



38 型紙摺染付丸碗



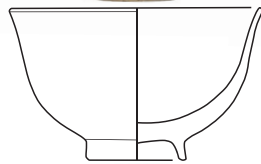
39



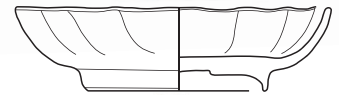
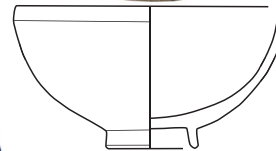
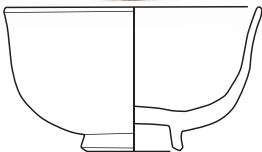
40



36



35



37



41



38

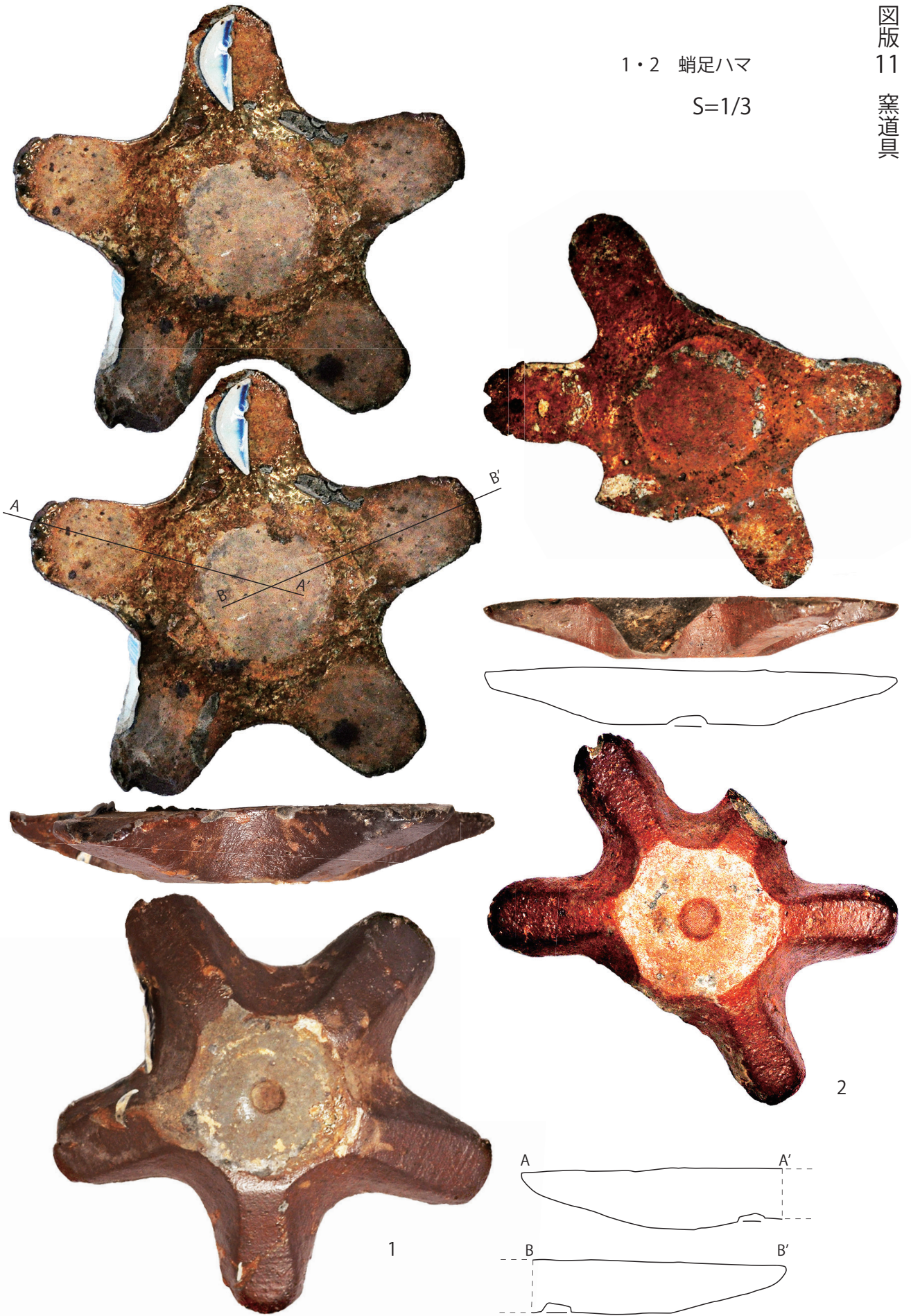


42

39 ~ 41 型紙摺染付小皿

42 型紙摺染付稜花皿

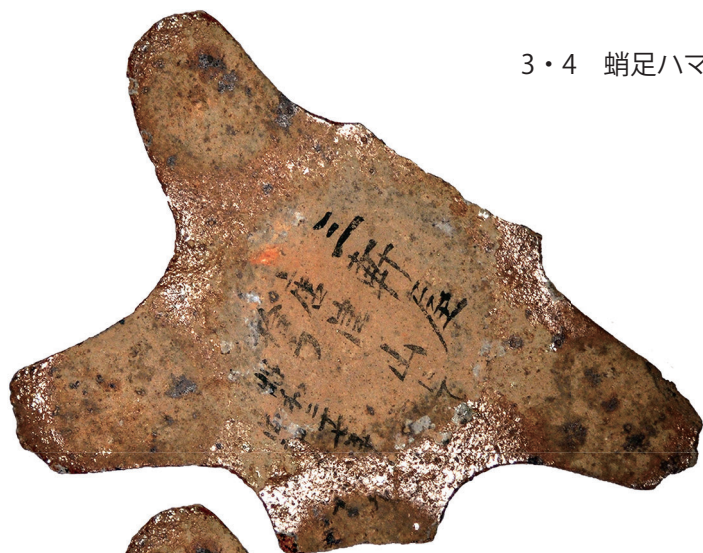
1・2 蛸足ハマ
S=1/3



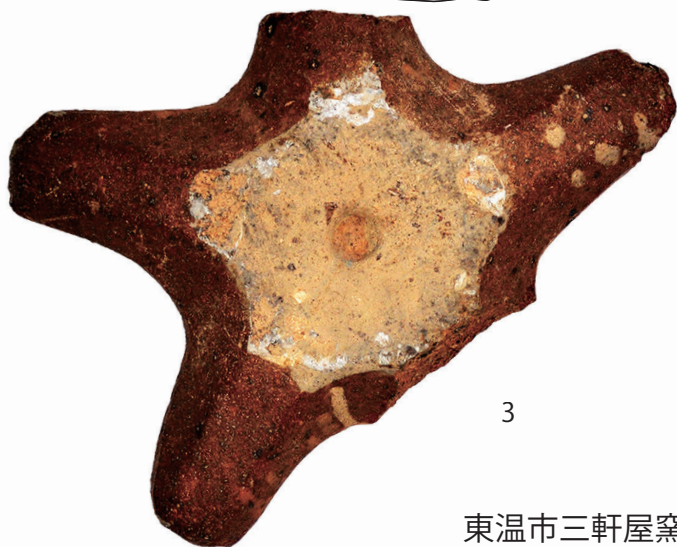
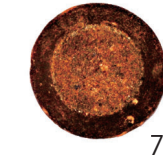
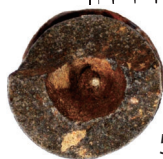
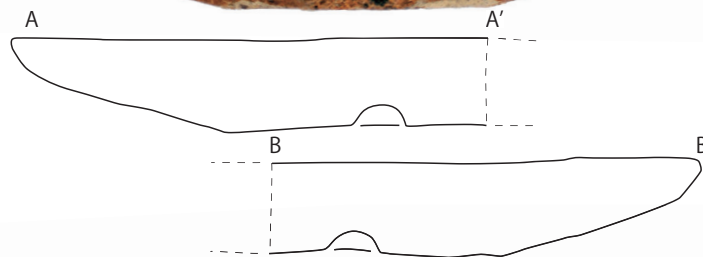
東温市三軒屋窯採集遺物（松三 1）

(1の断面図)

3・4 蛸足ハマ



5・6 ナンキン
7~9 ハマ
10・11 円盤



3

S=1/3

東温市三軒屋窯採集遺物 (松三 1)

11



1～5、8・9、13・14 染付碗

6・7、10～12 染付型紙摺碗

東温市三軒屋窯採集遺物（松三 1）

15・16 陶器鉢